



Litum

Transform. Reach beyond.

Material Handling Equipment:

Collision Warning Systems

OUR VALUE

Turnkey Solution Provider



Global experience

- › 17 years of global market presence operating in 45+ countries. All translated and reflected in current solution designs
- › Variety of use cases
- › Fortune 500 clientele



System integration



Agility

- › Customizable
- › Scalable



Proven customer satisfaction

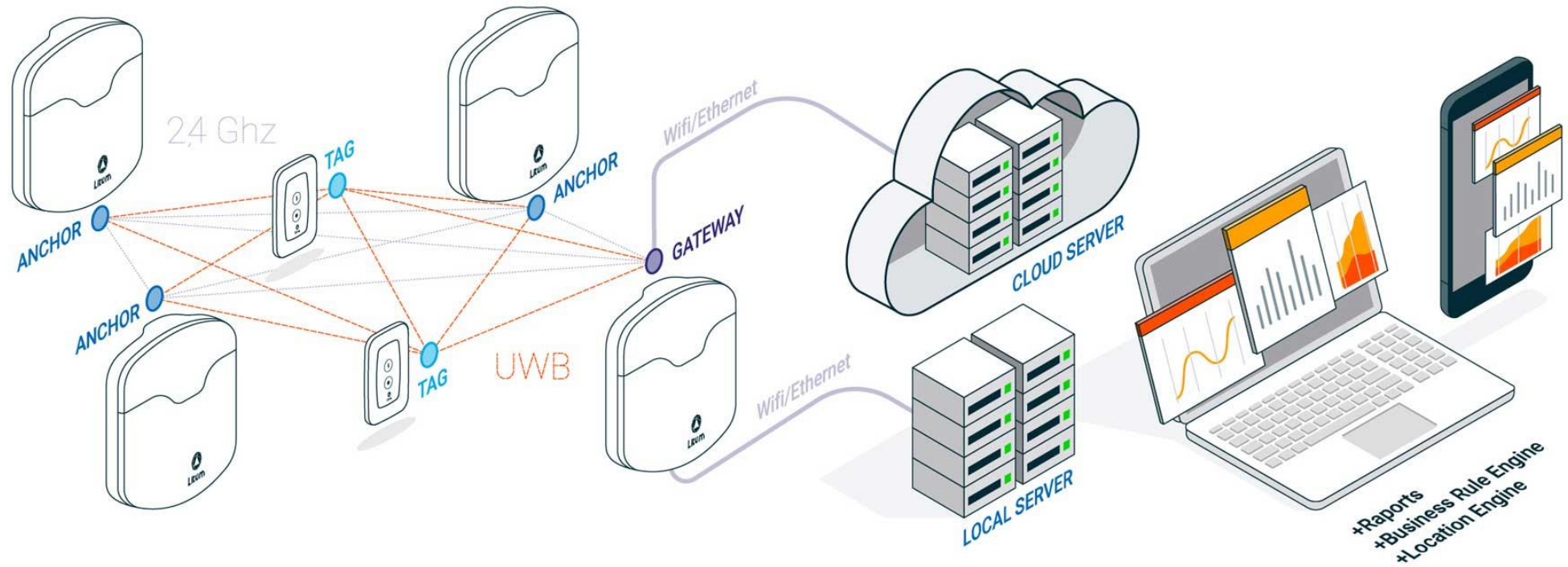
- › Organically expands with clients due to successful ongoing support and customer satisfaction

Our references

includes major Fortune 500 companies



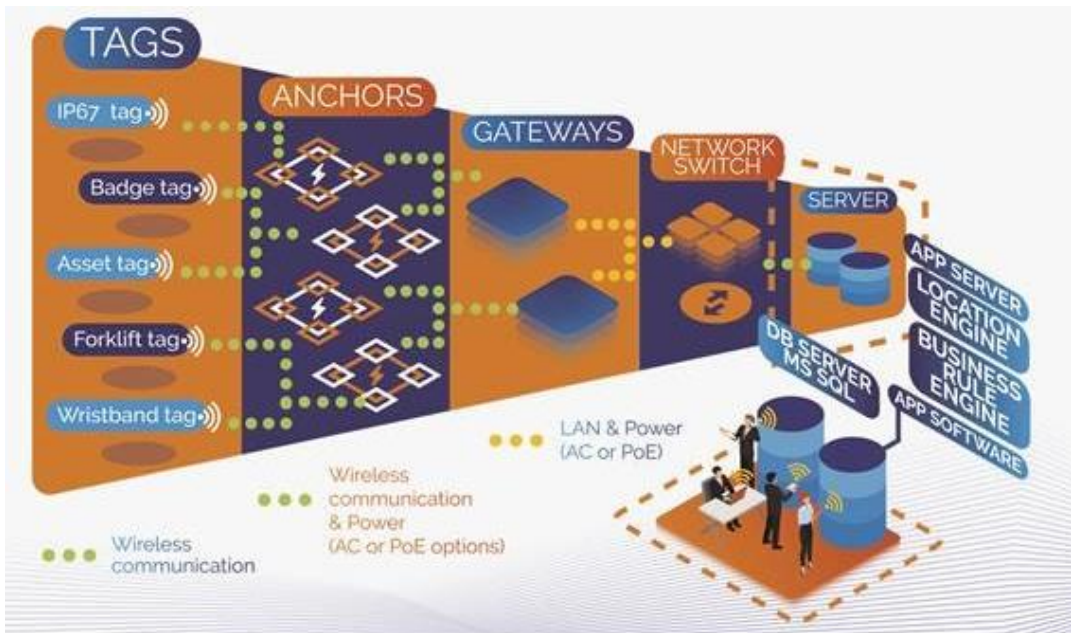
LITUM RTLS MESH NETWORK



LITUM RTLS PLATFORM

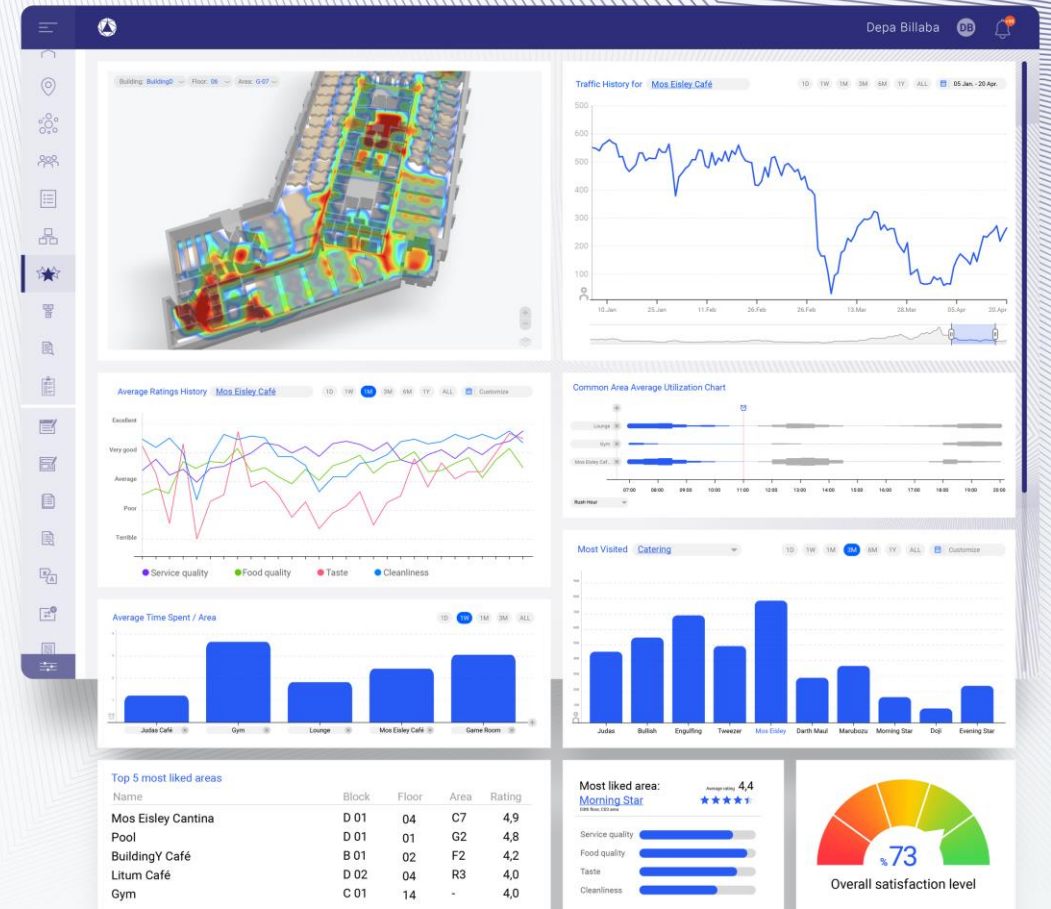
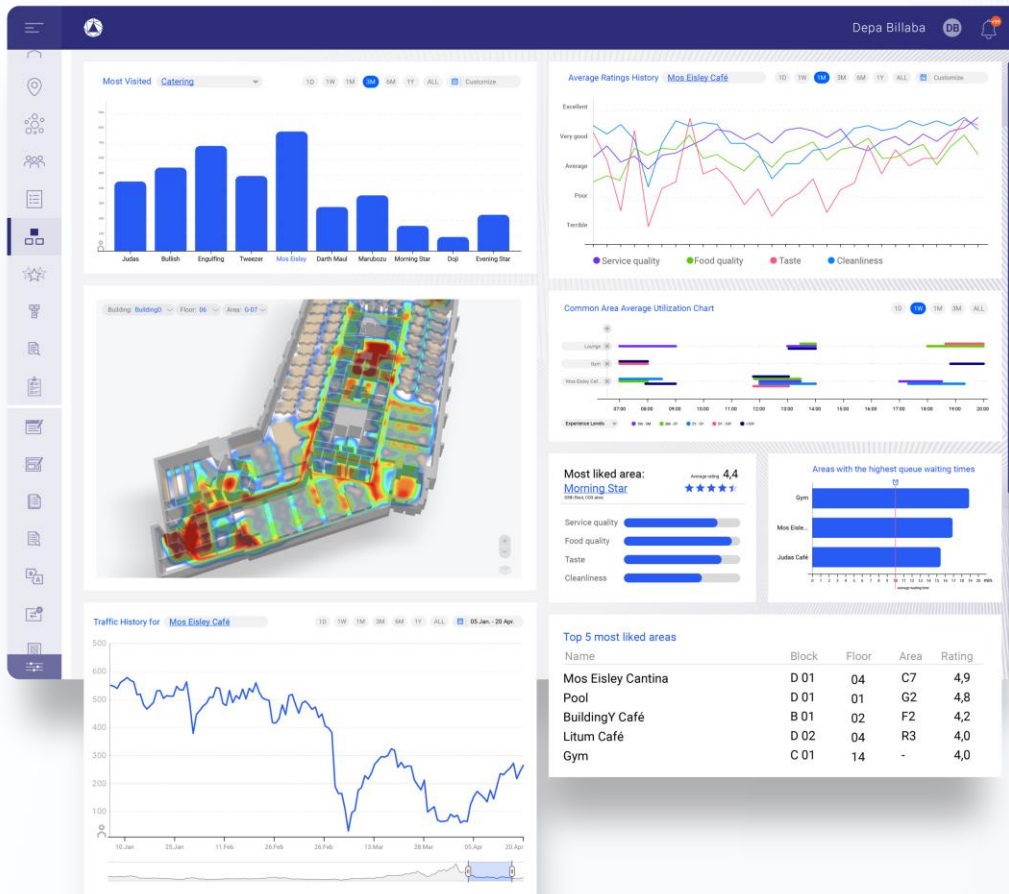
Features

- › Latest tech development environment
- › No browser and OS dependency
- › Mobile device support (OS and Android)
- › Advanced reporting
- › Map and satellite service support (e.g. Google maps)
- › High security standards
- › Supports SAML and OAuth based SSO integration
- › Integration with 3rd party applications by using Restful APIs



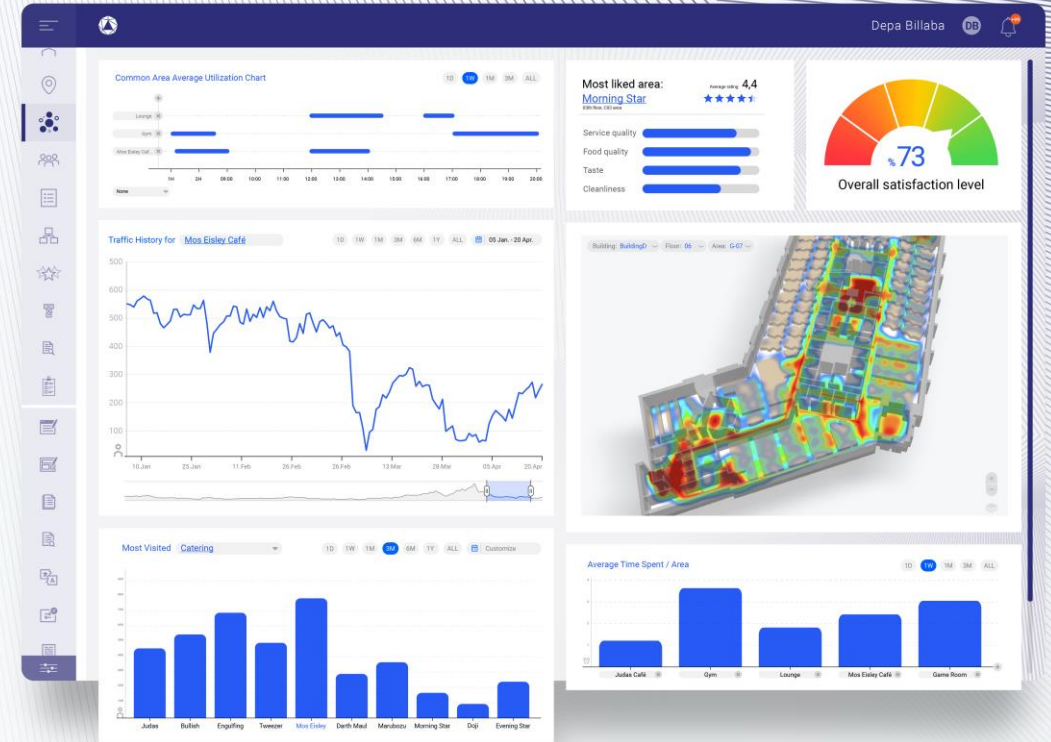
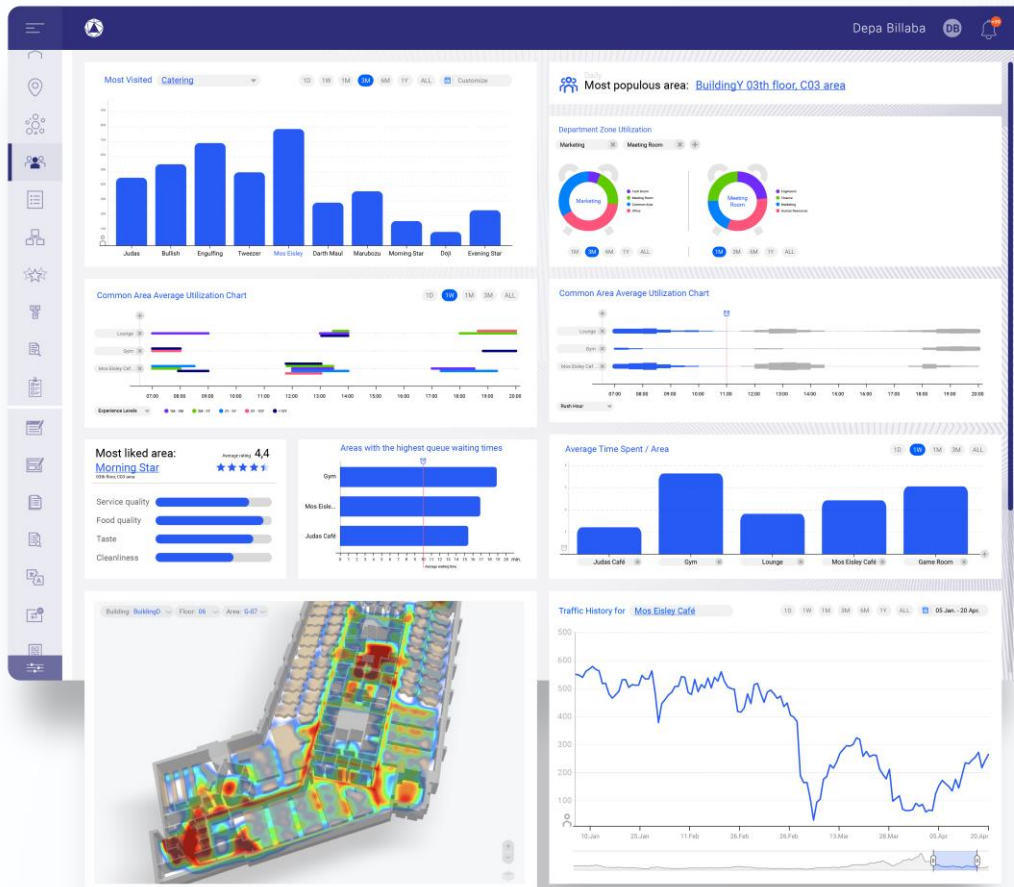
LITUM RTLS PLATFORM

DASHBOARDS AND REPORTS



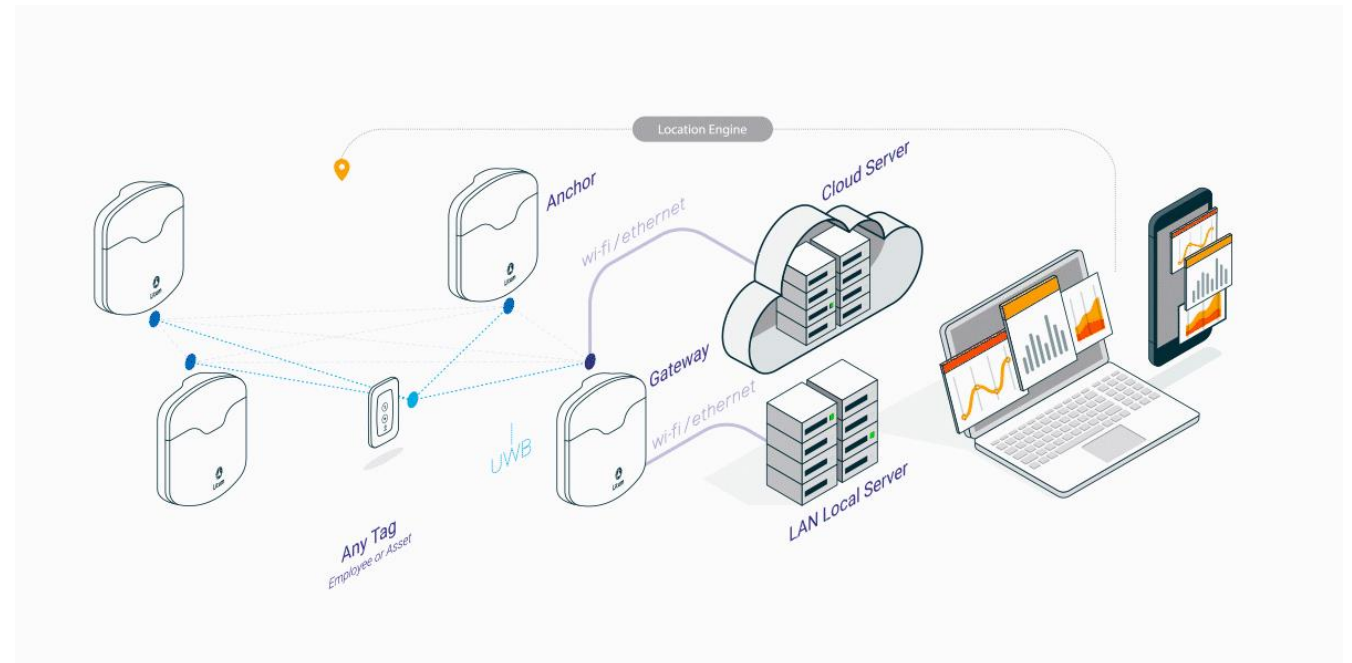
LITUM RTLS PLATFORM

DASHBOARDS AND REPORTS



LOCATION ENGINE

- › Distributed service architecture
- › Supports parallel computing
- › Multi-platform support (cloud or on-premise)
- › 6x faster processing
- › Improved location precision through filters
- › Supports devices from different generations and technologies
- › Supports trilateration (ToA), TDoA, Partial, 1D and Zonal location calculation methods



Collision Warning from Litum



Safety **Priority for maintenance, impacts TCO**

In fact, studies performed by OSHA have shown a 20-40% reduction in costs after implementing safety plans. Other authorities, like H.W. Heinrich, have shown a 4:1 return on investment when safety is made a priority in the workplace.



Uptime **Minimized accident risk**

Amazon has valued their downtime upwards of \$180,000 per hour. In a smaller business, estimate is around \$20,000 per day – still pretty significant



Plug and Play **Easy to install, no complex integration**

Forklift collision warning operation



Forklift to Forklift

- When two forklifts approach each other accident risk is minimized by alerting the drivers based on preset rules for yellow and red zones
- Sound and light alerts



Forklift to Employee

- When a forklift gets within a preset distance to an employee wearing Litum Tag both parties are alerted
- Sound, light and vibration alerts

How it Works

- **Define Red/Yellow/Green states**

Default settings



- Green – nothing within 11m (Allow full speed)
- Yellow – Tag detected 6 – 11 m away (reduce speed zone)
- Red – Tag detected closer than 6m (slowest speed)

- **Reconfigure states to suit the site**

- Sniffer device connected tablet via USB
- Used to configure tags



Module

Base Kit

Optional

Essential Safety

Litum Forklift Collision Warning
w/audiovisual alerts

Personnel Safety (Additional personnel
tags required)

Program Components

LITUM® FORKLIFT SAFETY SOLUTION COMPONENTS

Litum Collision Warning



Litum Collision Relay



Litum Alert Box
(New design on the way)

Tags for employee safety



Litum Tags - Badge &
Compact formats

Sniffer



Orbit

Accessories



Wireless charger
Power cables
(Connect to FL battery)

Features & Benefits

FEATURES

- Compact and robust design
- Optional relay output for slow down
- Different mounting types
- High processor performance for business rules

BENEFITS

- Automatic operator detection
- Configurable warning and alarm zone distances
- Alert box with for audiovisual alerts.
- Improves forklift movements to avoid collision
- Highly accurate location detection
- Edge processing – immediate alert/action

USE CASES

- Vehicle tracking
- Zone access control
- Proximity detection
- Vehicle – Vehicle & People – Vehicle

Item	Product Name	Comm. Port		Indicators (Alert/Siren/Buzzer)
		RS485	Relay Output	
1	Litum Collision Relay	✓	✓	x
2	Litum Alert Box w/ wireless connection to anchor	x	x	Light + Siren
3	Litum Orbit (1 per deployment) – wireless programming device	x	x	x
4	Litum Tag Badge	x	x	Light + Vibration
5	Litum Tag Compact	x	x	Light + Vibration
6	Power Cable for Litum Collision Warning Relay			



Technical Specifications for Litum Collision Warning System



Litum Collision Relay



Litum Alert Box



Litum Tag Badge



Litum Tag Compact

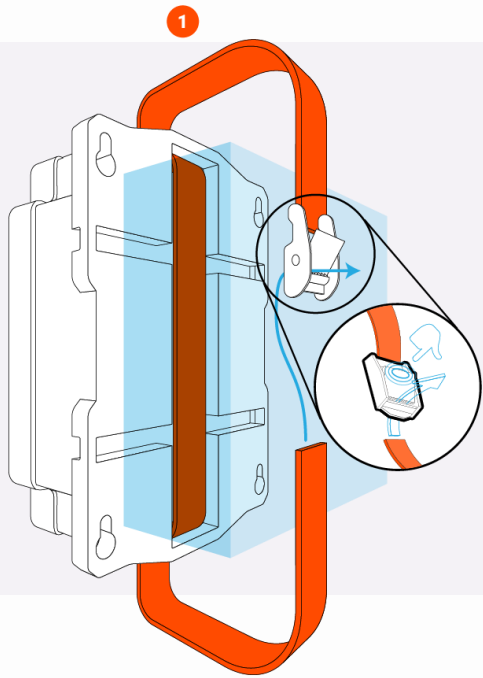


Litum Sniffer Orbit

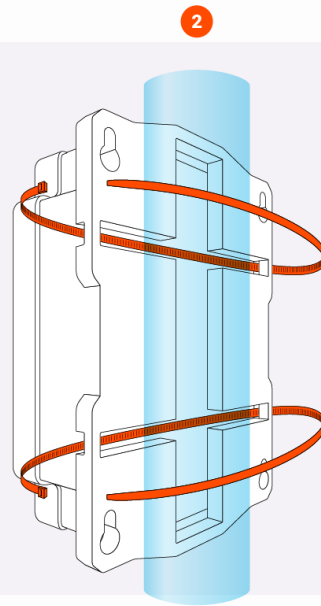
General	Dimensions	104 x 155 x 60 mm (4.10 x 6.10 x 2.35 in.)	65 x 154 x 59 mm (2.5 x 6.0 x 2.3 in.)	63 x 90 x 11 mm (2.5 x 3.5 x 0.4 in)	37 x 45 x 15 mm (1.5 x 1.8 x 0.6 in)	50.5 x 69.5 x 21 mm (2.00 x 2.75 x 0.85 in)
	Weight	256 g (9.05 oz)	325 gr. (11.4 oz)	44 g (1.6 oz)	29 g (1.1 oz)	40.2 g (1.40 oz)
	Casing	PP GF %30 V0	ABS	ABS	ABS	ABS
	Remote firmware update	✓	✓	✓	✓	✓
	Power / Battery	9 – 30 V	9 – 30 V	3.7V 700 mAh Li-Po	3.7V 330 mAh Li-Po	Mini USB
Features	Indicators	LED (RGB)	LED + Siren	LED + Vibration	LED + Vibration	LED
	Frequency	2.4 GHz ISM & UWB channels	Wireless connection to anchor	UWB channels	UWB channels	UWB channels
Other	Certification	FCC	FCC	FCC, RoHS	FCC, CE, IC	FCC
	Accessories	Power Cable	Power cable	Qi Wireless charging	Qi Wireless charging	Mini USB

Installation & Operation

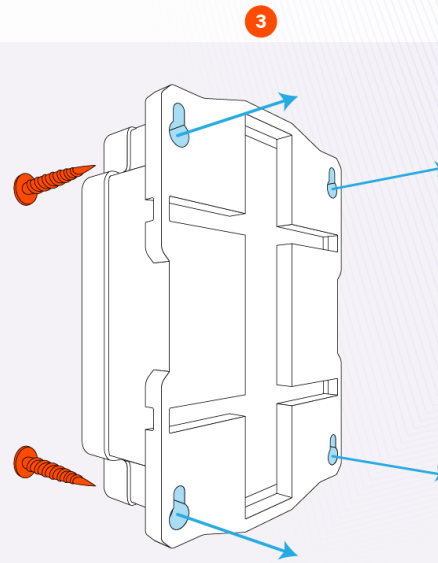
Plug & Play Installation



Belt



Cable tie



Screw



Litum
Transform. Reach beyond.

Thank you!

[Litum.com](https://litum.com) | info@litum.com