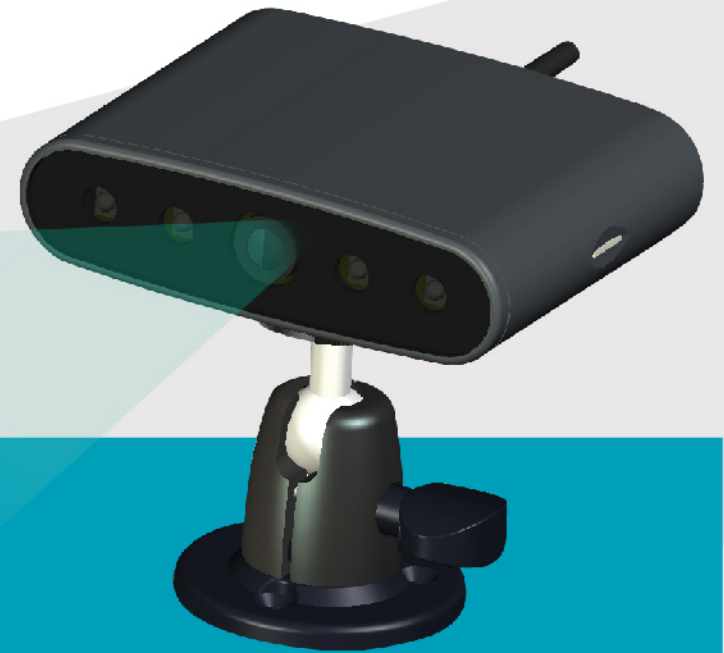
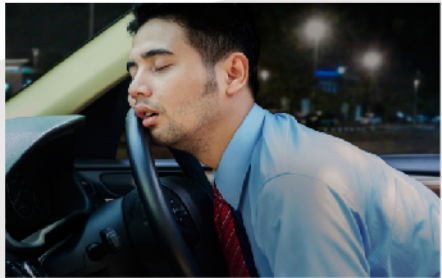


Driver Fatigue Monitoring System



Why the Driver Fatigue Monitoring System is needed?

Driver fatigue is a main cause for a large number of vehicle accidents. It is particularly dangerous and it might happen to anyone, no matter how experienced a driver is.

The use of Driver Fatigue Monitoring System can constantly monitor the driver's driving status, promptly give warnings upon abnormal driving behaviors, and therefore effectively reduce accidents caused by fatigue driving.



Facial Feature Recognition

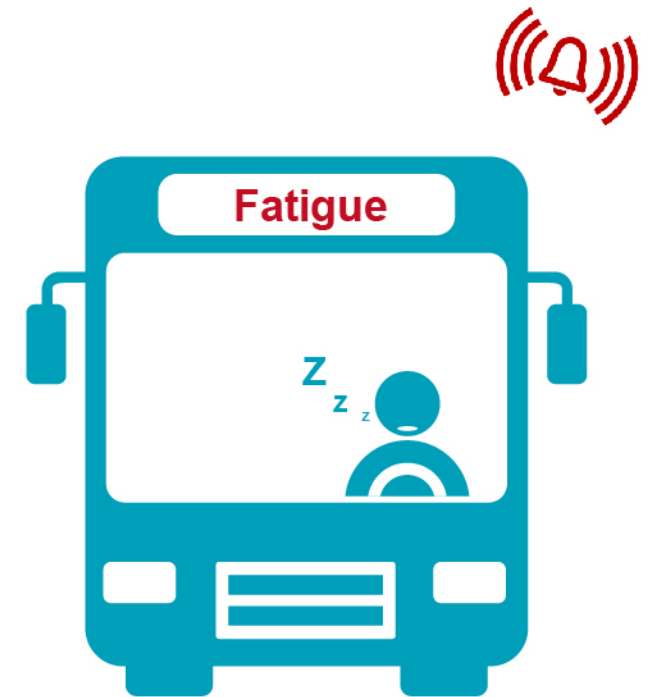


STONKAM® Driver Fatigue Monitoring System, based on facial feature recognition, collects the driver's face images through the camera to locate the head posture and obtain the current face features, and then compares them with various abnormal driving behavior models in the database to identify the driver's current status. If there is any abnormal driving behavior (such as fatigue, smoking, phone call), sound and light alarms will be given.

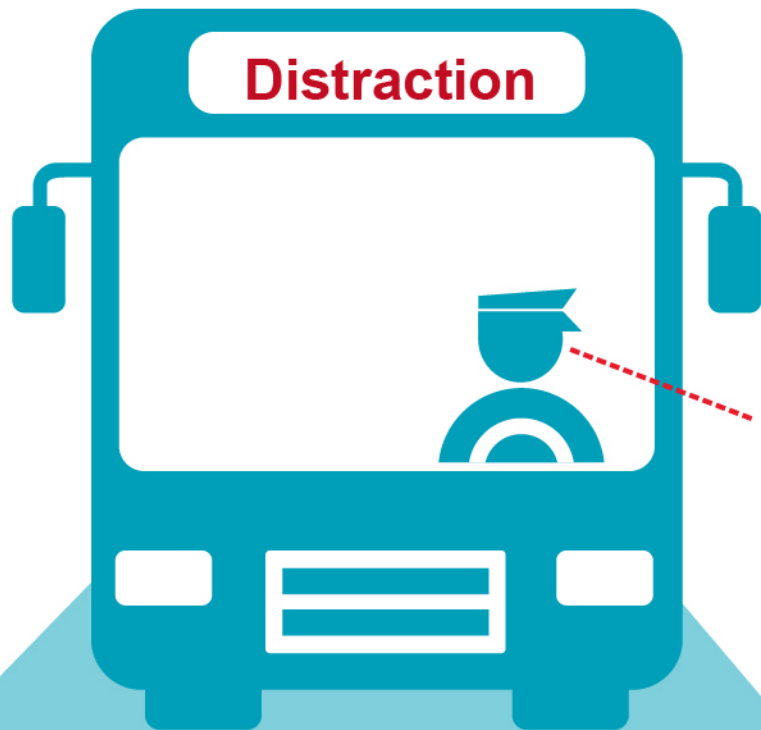


Fatigue Driving Detection

Identify the driver's state by monitoring the eye closeness rate (ECR) .



Distraction Driving Detection



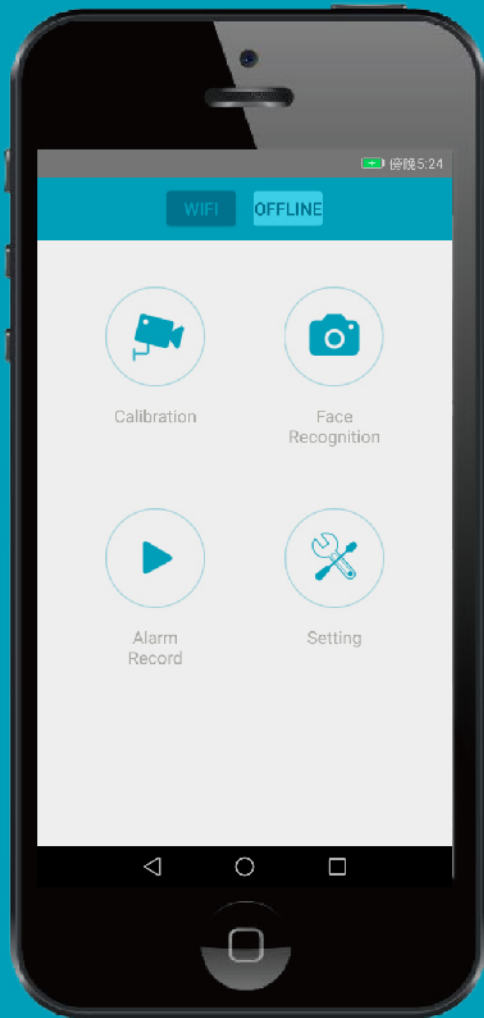
When the driver's line of sight deviates from the driving direction, the system will automatically give sound and light alarms.



Other Abnormal Driving Behaviors Detection

If there is any abnormal driving behavior (such as smoking, phone call) detected, sound and light alarms will be given.



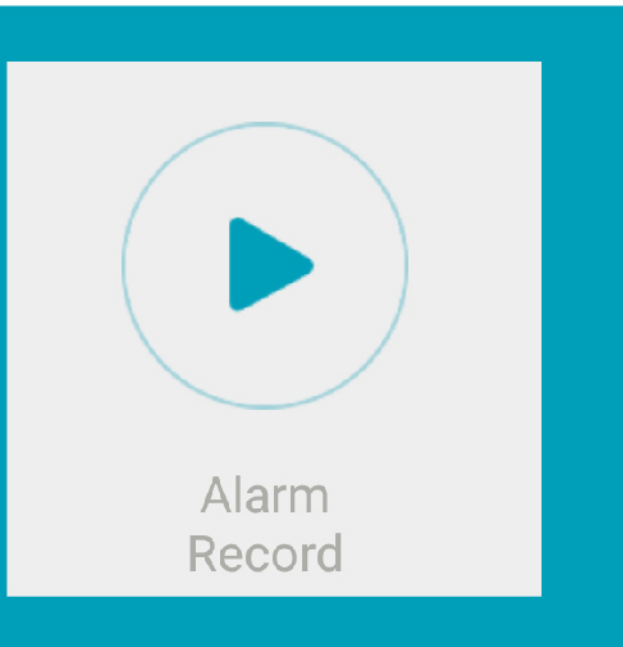


Connect to APP via Wi-Fi

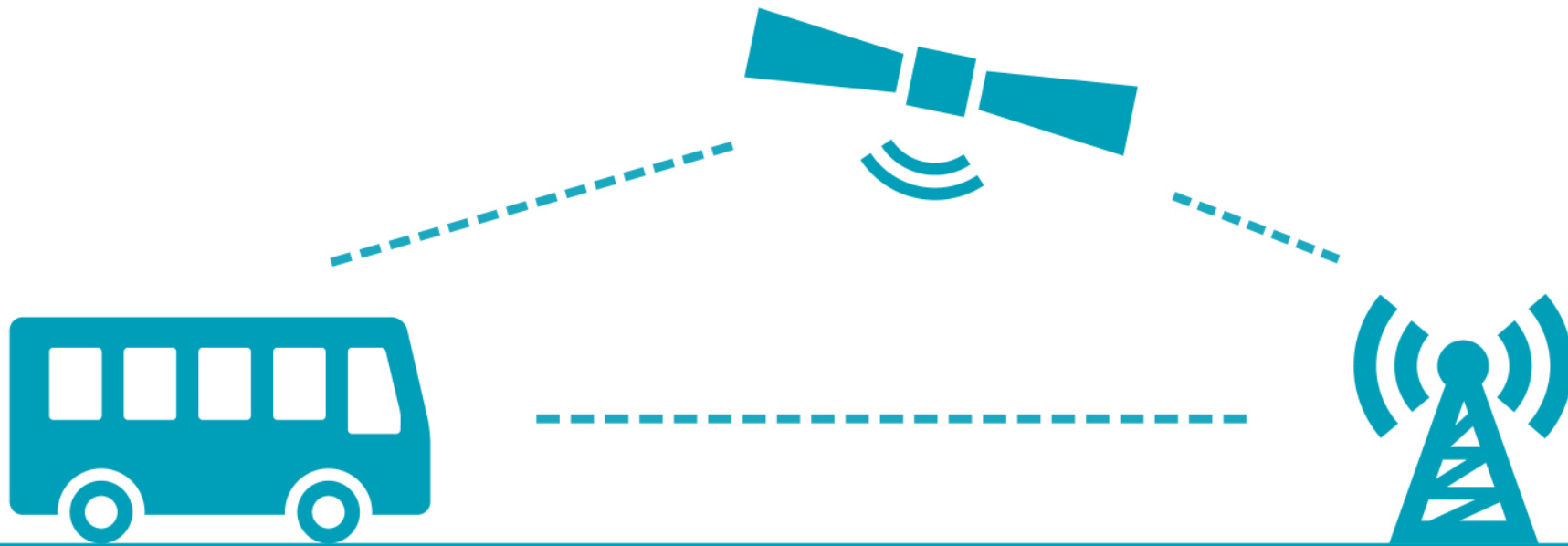
The Driver Fatigue Monitoring System can connect to an APP designed by STONKAM® on mobile phone via Wi-Fi. Device configuration, file uploading and other functions are available on the APP.

720P HD Recording

When the system detects abnormal driving behaviors, it will automatically give alarms and record for about 20 seconds of 720P HD resolution on 1 x 128GB (Max.) Micro SD card.



FACE FAILURE		ABNORMAL DRIVING
20171205043834_ff.avi	✓	59mb
20171205043334_ff.avi	✓	45mb
20171205041834_ff.avi	✓	59mb



Built-in GPS Enables the System to Automatically Start or Stop Working

The system records the vehicle position and vehicle speed through GPS when alarm recording occurs. And it automatically stops working when the vehicle speed is lower than 5km/h, without the need for the driver to manually turn down the system.

• Driver Fatigue Monitoring System

- Fatigue driving detection
- Distraction driving detection
- Abnormal driving behavior detection (phone call / smoking)
- 720P camera
- Support CVBS output
- 1 x 128GB Micro SD card for recording
- Built-in Wi-Fi and GPS
- DC power: 9-36V

