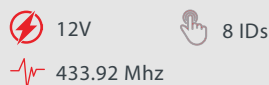
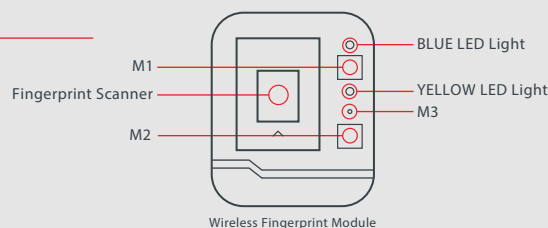
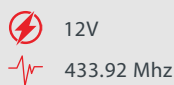


ACCESSORIES

Wireless Fingerprint Module



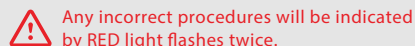
F800 Wireless relay



REGISTER FINGERPRINTS

Admin user (1st user) fingerprint

1. Press M1 button. The YELLOW light turns on.
 2. Place the desired finger within 20 seconds on the fingerprint reader for 3 to 5 seconds until you see a flash of GREEN light. Then, the YELLOW light will turn on.
 3. Lift the admin finger.
 4. Repeat step 2 & 3 again for 5 times.
- After repeating step 2 & 3 for the 5th time, BLUE Light will flash once indicating a successful set up for the admin fingerprint ID.



2nd user fingerprint

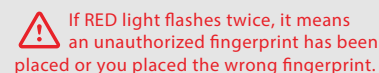
1. Press M1 button. The YELLOW light turns on.
 2. Place the admin finger (1st ID) on the fingerprint reader until you see a flash of GREEN light. Then, the YELLOW light will turn on.
 3. Lift the admin finger.
 4. Place the user finger on the fingerprint reader until you see a flash of GREEN light. Then, the YELLOW light will turn on.
 5. Lift the user finger.
 6. Repeat step 4 & 5 again for 5 times with the same user finger.
- After repeating step 4 & 5 for the 5th time, BLUE Light will flash twice indicating a successful set up for the user fingerprint ID.

3rd to 8th user fingerprint

1. Press M1 button. The YELLOW light turns on.
 2. Place the admin finger (1st ID) on until you see a flash of GREEN light. Then, the YELLOW light will turn on.
 3. Lift the admin finger.
 4. Place the user finger on until you see a flash of GREEN light. Then, the YELLOW light will turn on.
 5. Lift the user finger.
 6. Repeat step 4 & 5 again for 5 times with the same user finger.
- After repeating step 4 & 5 for the 5th time, BLUE Light will flash
- | | |
|--|--|
| - 3 times for the 3 rd user | - 4 times for the 4 th user |
| - 5 times for the 5 th user | - 6 times for the 6 th user |
| - 7 times for the 7 th user | - 8 times for the 8 th user |

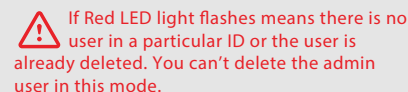
HOW THE SYSTEM WORKS

1. Turn key switch to ACC/ACCESSORY position.
2. Place the authorized fingerprint on reader for 1 to 2 seconds.
3. If the GREEN light flashes twice, the system will send wireless code to disarm.
4. Now you can start the vehicle engine (ON/RUN) position.



DELETE 2ND TO 8TH FINGERPRINT ID

1. Press & hold button (reset) M3 for about 3 seconds until the YELLOW light turns on.
2. Place the admin fingerprint until you see the GREEN light flashes twice. Then, the YELLOW turns on.
3. Press & hold button M2 until the BLUE light flashes:
 - 2 times for the 2nd user then release M2
 - 3 times for the 3rd user then release M2
 - 4 times for the 4th user then release M2
 - 5 times for the 5th user then release M2
 - 6 times for the 6th user then release M2
 - 7 times for the 7th user then release M2
 - 8 times for the 8th user then release M2
4. Press M3 once to delete the user in 3 seconds.



VALET MODE

Enter Valet Mode

1. Press & hold M1+M2 for 3 seconds until the YELLOW light turns on.
2. Place any authorized fingerprints on the reader unit the GREEN light flashes twice then the BLUE light will start flashing indicating VALET MODE is active.

Exit Valet Mode

1. Press & hold M1+M2 for 3 seconds until the YELLOW light turns On.
 2. Place any authorized fingerprints on the reader unit you see GREEN light flashing twice then the BLUE light will stop flashing.
- Now, standby mode is activated, a fingerprint is required to start the engine again.

DELETE ALL FINGERPRINTS

The Default PIN CODE is (3, 6). Meaning the BLUE lights has to flash 3 times in the first sequence and 6 times in the second sequence .

1. Press & hold M2 for 5 seconds until YELLOW turns on.
2. Enter PIN CODE, Default (3, 6)
 1. Press & hold M2 until BLUE light flashes 3 times then release M2.
 2. Press & hold M2 until BLUE light flashes 6 times then release M2.

You will see a flash of green light after a successful entry of PIN CODE.

SET UP NEW PIN CODE

1. Press & hold M1 for 5 seconds until YELLOW turns on.
2. Enter PIN CODE, Default (3, 6)
 1. Press & hold M2 until BLUE light flashes 3 times then release M2.
 2. Press & hold M2 until BLUE light flashes 6 times then release M2.

You will see a flash of green light after a successful entry of the PIN CODE.
3. Enter NEW PIN CODE, for example (2, 5)
 1. Press & hold M2 until BLUE light flashes 2 times then release M2.
 2. Press & hold M2 until BLUE light flashes 5 times then release M2.

REST TO DEFAULT PIN CODE

1. Press & hold M1 until the YELLOW light turns on.
2. Place the admin fingerprint on the reader within 20 seconds for 6 to 7 seconds. GREEN Light will flash twice.

Now, the PIN CODE is reset to (3, 6)